



FERRELL RESIDENCES  
SINGAPORE

A Luxury Development in the  
Prime Bukit Timah District

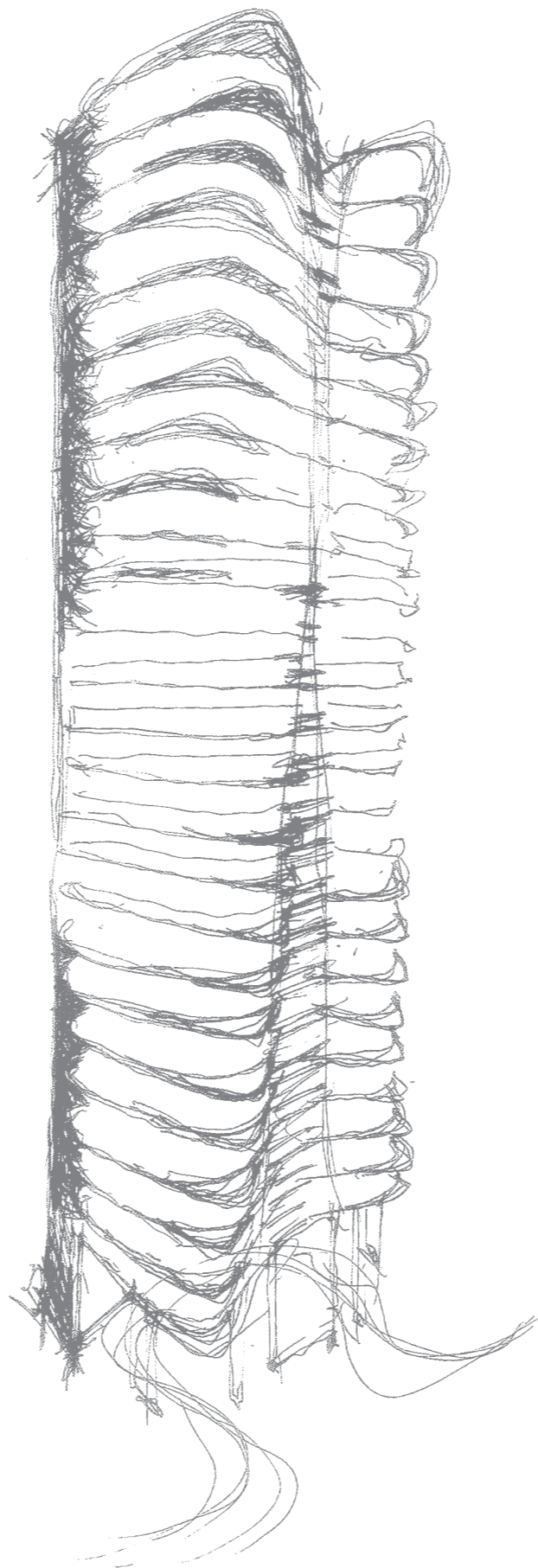
The Art of Movement



Shaped in rhythm with nature



A seamless flow of living space



Two symmetrical forms  
dance an elegant duet,  
joining as one as they rise  
24 storeys in unison,  
extending skyward in  
a graceful show of  
strength and balance.  
Perfect proportions.  
A sensual silhouette.  
Beautifully choreographed  
for timeless  
contemporary living.



The architecture's fluid curves make a soaring statement of uniqueness.



The eloquent ground level entrance to your tranquil abode.



Privacy partners openness in every home. With just two apartments per storey, each apartment is served by a private lift that takes you right to your front door. Inside, the sense of space is luxurious. The open concept living and dining room is the heart of home, expanding onto a wraparound balcony that welcomes in abundant light and air, with exposure to 270-degree views. Bedrooms are comparably large, some with full-height windows on either end to let in more of the outdoors.



Discover an oasis of resort-like relaxation at the sky terrace on the fifth storey above the rush of the city. An extension of your private living space where you can indulge in a range of lifestyle pleasures – a dip in the pool, a workout in the open-air gym, unwinding in the spa and jet pool, or hosting parties under the night sky at the dining lounge or the pool deck.





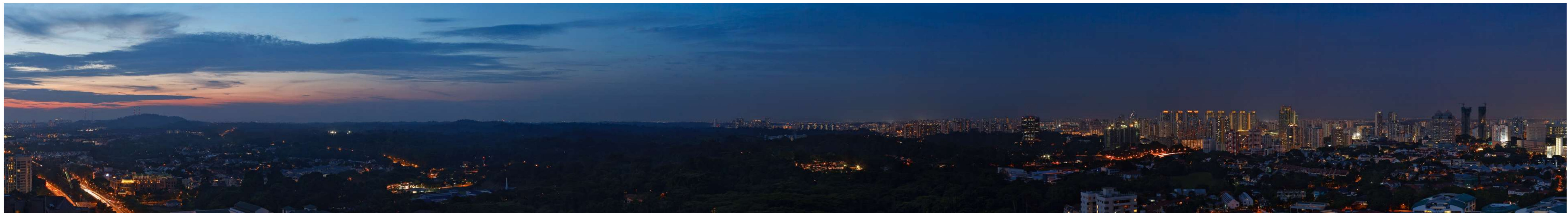
Luxury living soars to new heights in the two exclusive four-bedroom penthouses – one single- and one double-storey offering space on a grand scale, accentuated by the most magnificent views stretching from the green surrounds towards the vibrant city skyline.

#### PENTHOUSE 1

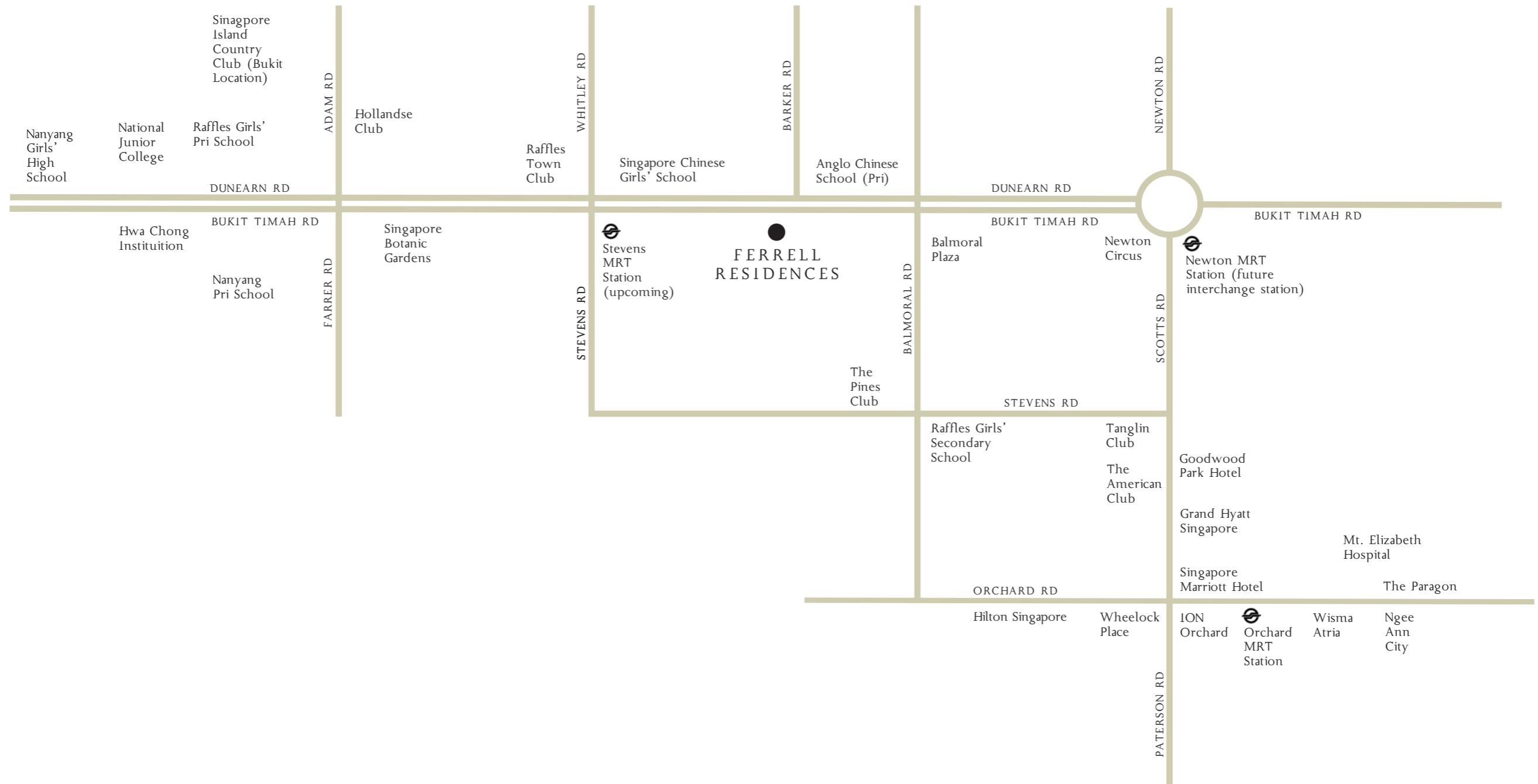
The single-storey penthouse unfolds in a flexible arrangement of living areas for privacy and for gathering, complete with your own private pool.

#### PENTHOUSE 2

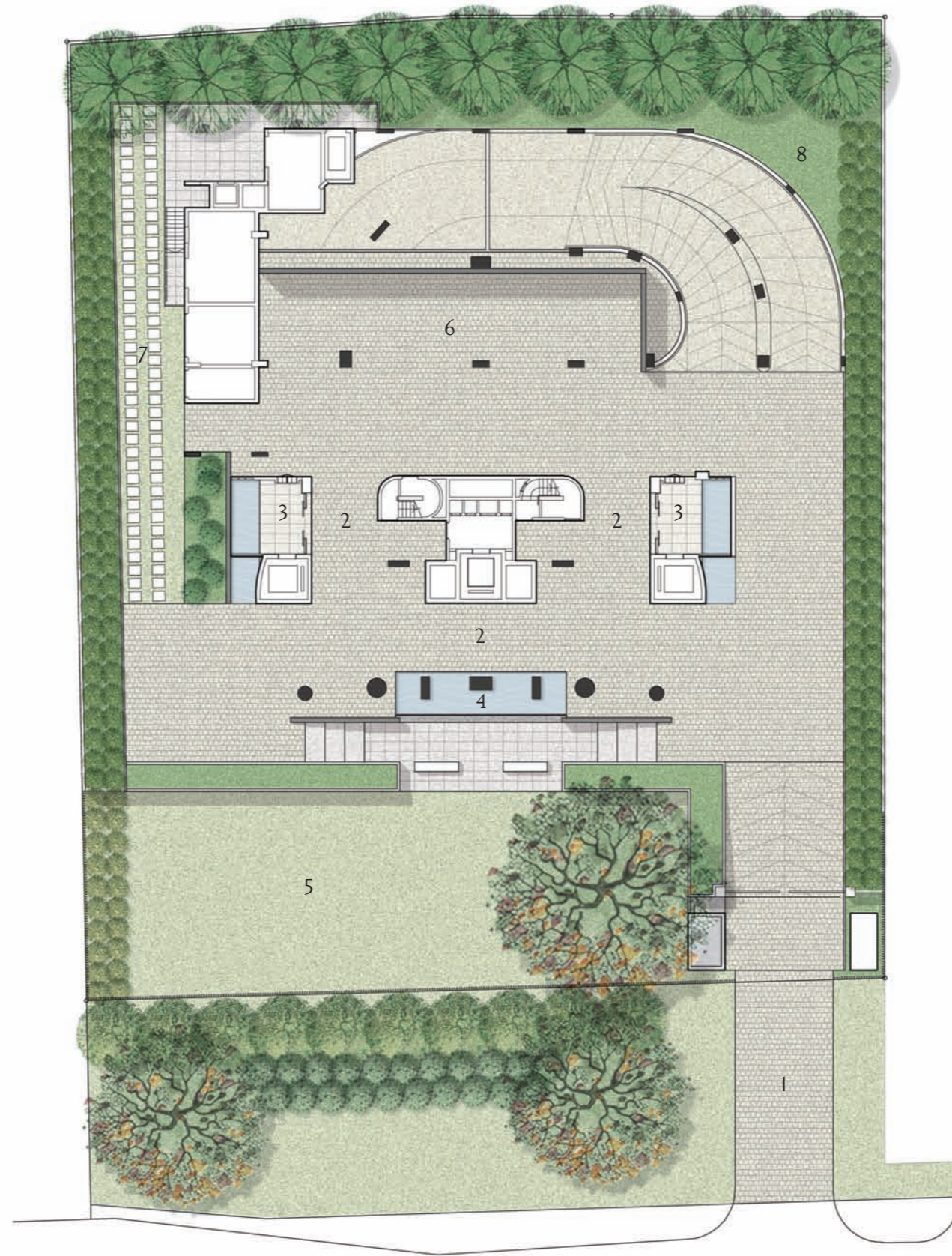
The double-storey penthouse feels like a bungalow in the sky, with direct lift entry to both levels. The lower level is devoted to the privacy of the bedrooms, including a master suite that opens onto its own pool. The upper level is perfectly laid out for entertaining with living and dining spaces cradled around a second centrally featured pool. Here on the highest floor, you float on top of the world.



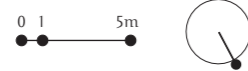
Gaze upon an unending panorama of green and the glittering city skyline.



In this prestigious Bukit Timah neighbourhood, the richness of life revolves around you with restaurants, supermarkets, premier schools and top country clubs. It's also just a few minutes' drive to the main shopping belt of Orchard Road, the Singapore Botanic Gardens and the business district.



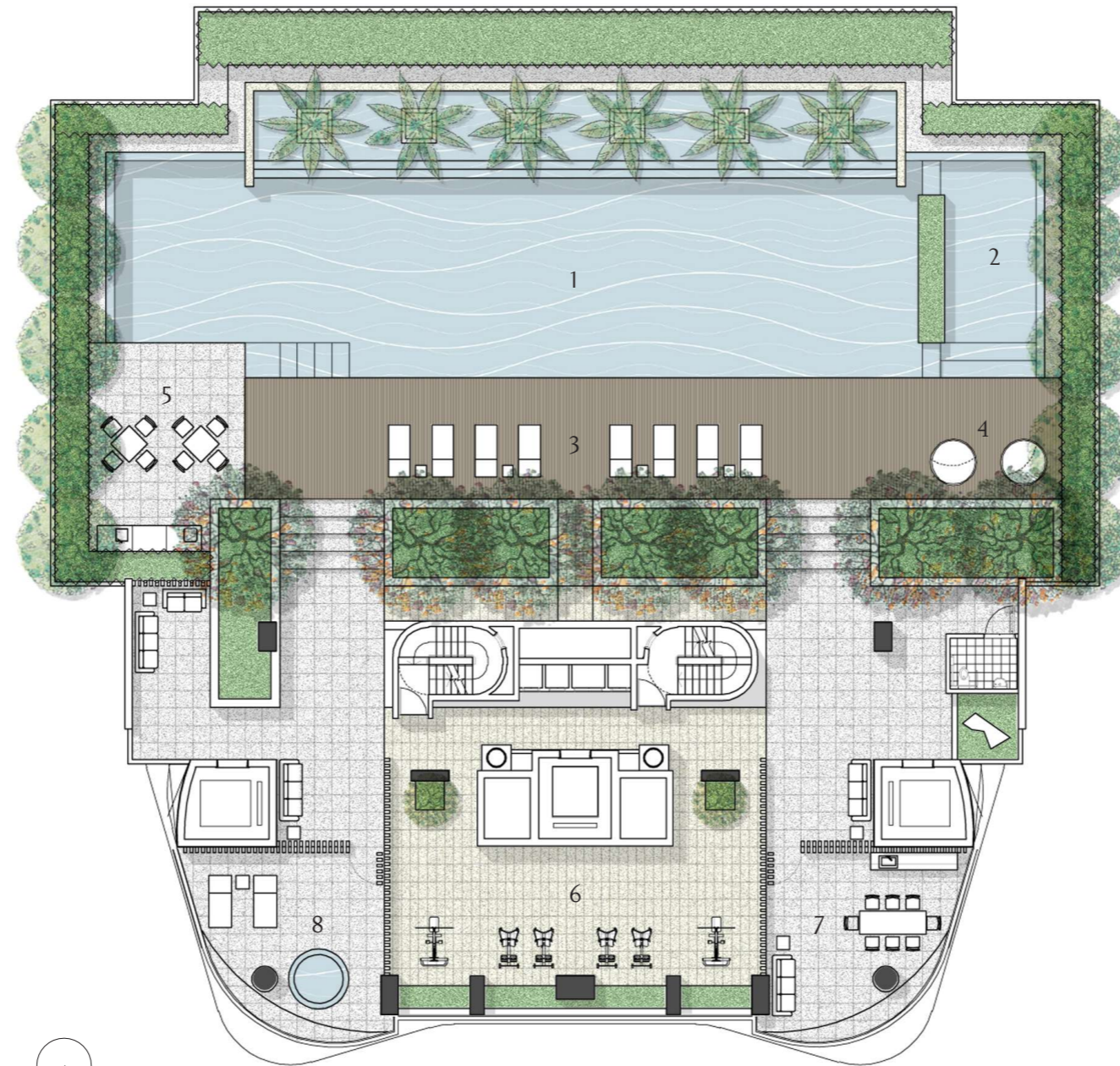
Ground Level Plan



A refreshing sense of light, air and space greets you at the ground level arrival court and lift lobbies, overlooking landscaped lawns and water features.

- 1. Entrance Driveway
- 2. Drop Off
- 3. Lobby
- 4. Water Feature
- 5. Lawn
- 6. Parking
- 7. Outdoor Service Access
- 8. Garden

BUKIT TIMAH ROAD

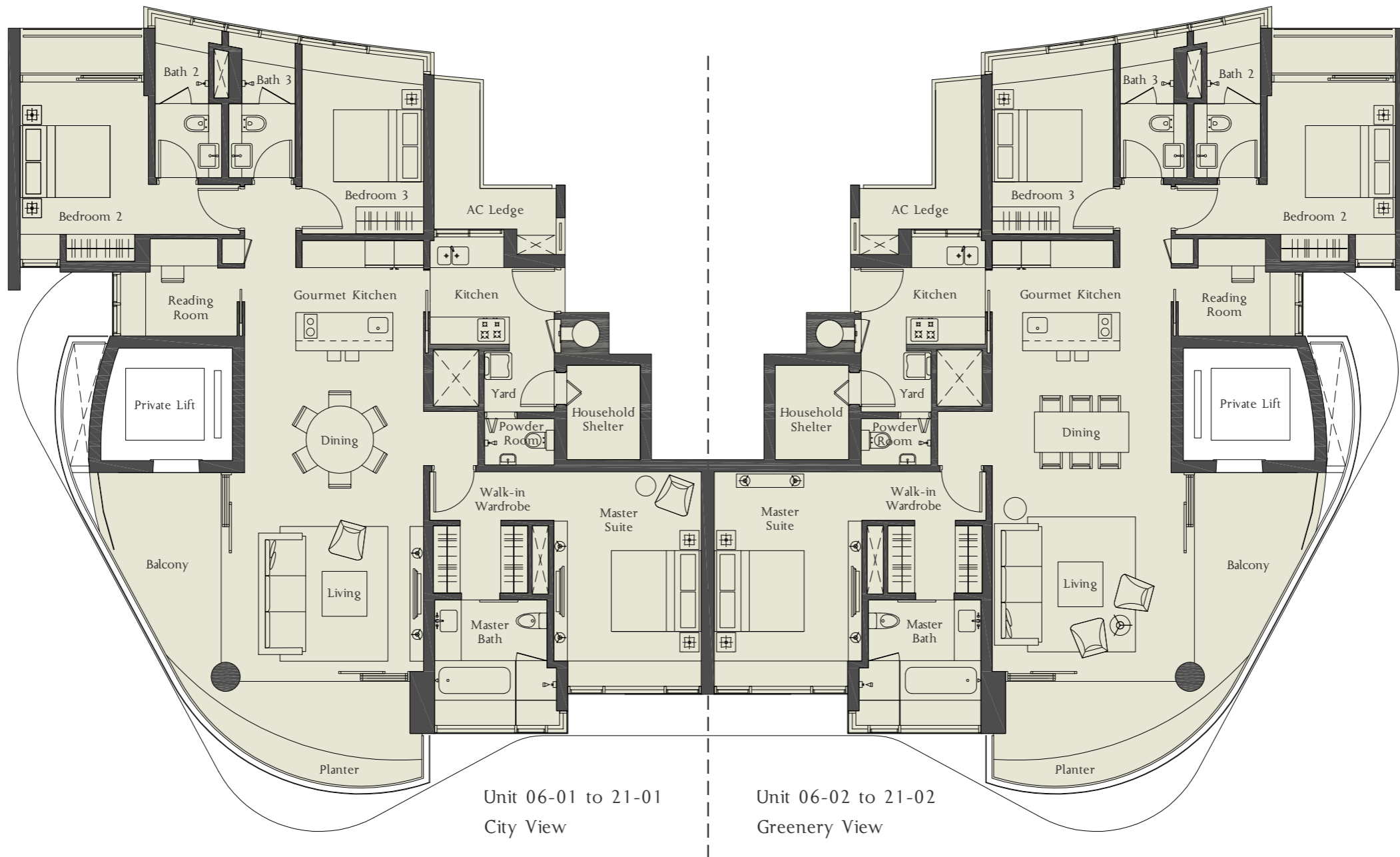


Fifth Storey Plan

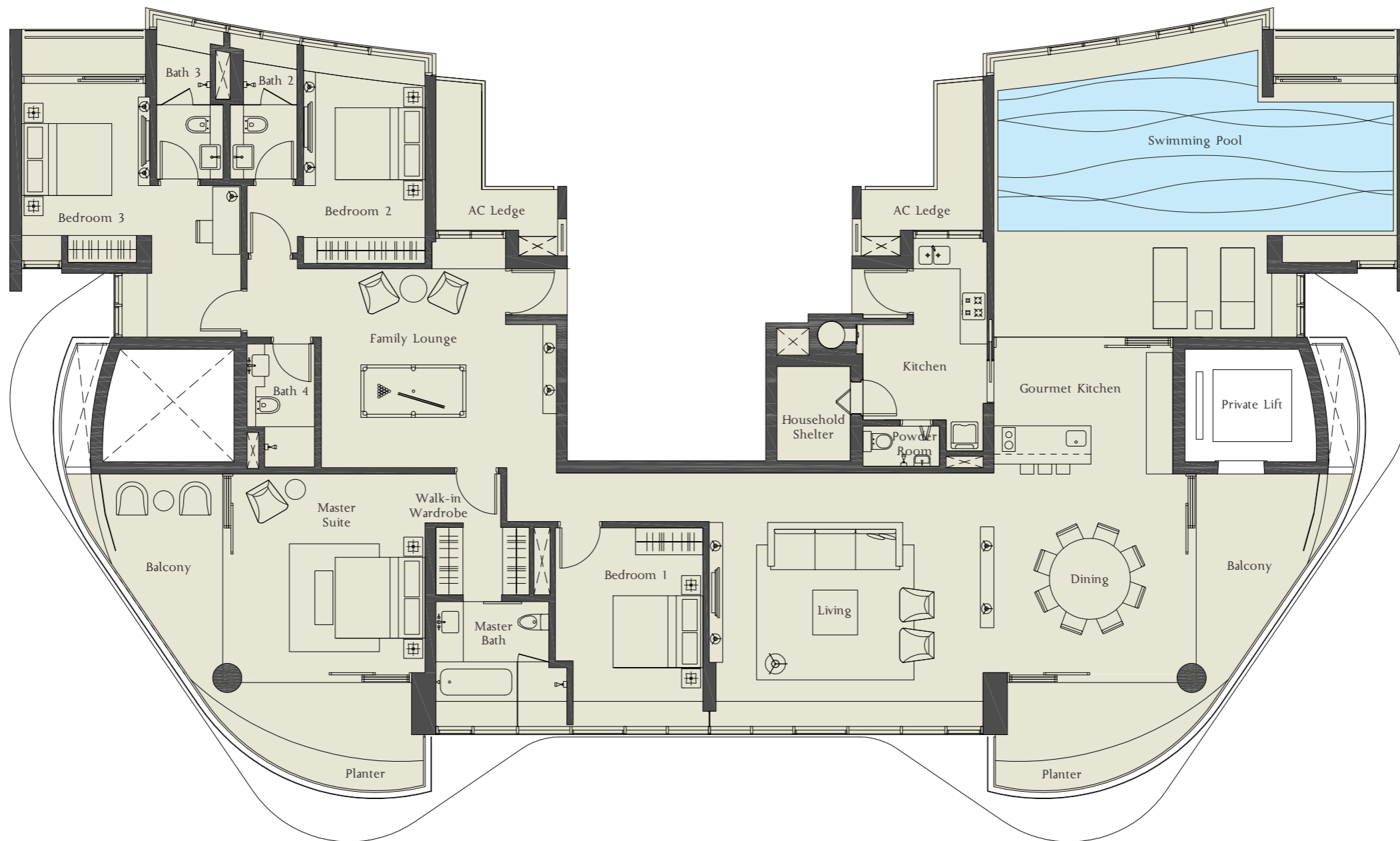
0 1 5m



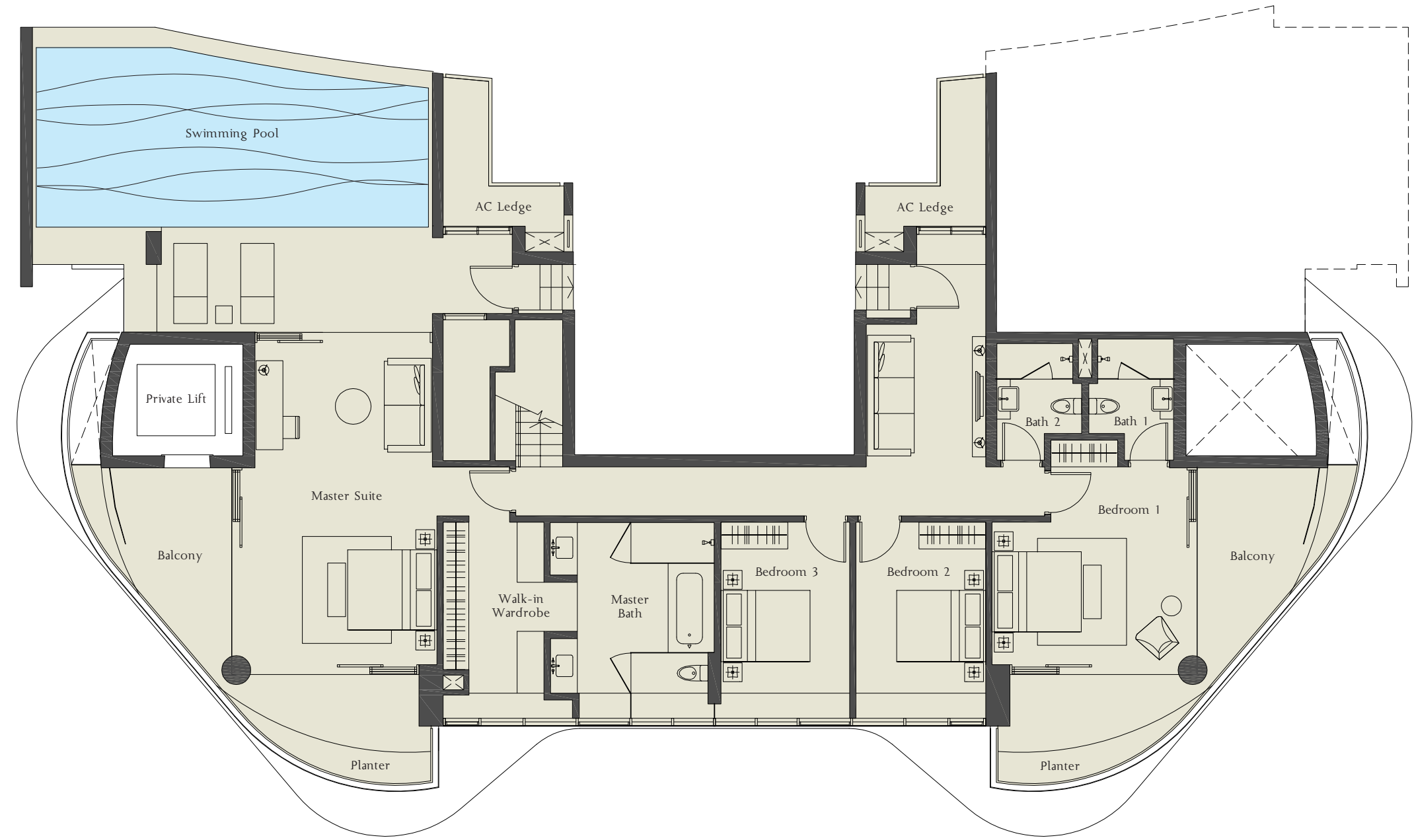
- 1. Lap Pool
- 2. Children Pool
- 3. Sun Deck
- 4. Cabanas
- 5. BBQ / Outdoor Dining
- 6. Open Air Gym
- 7. Dining Lounge
- 8. Spa



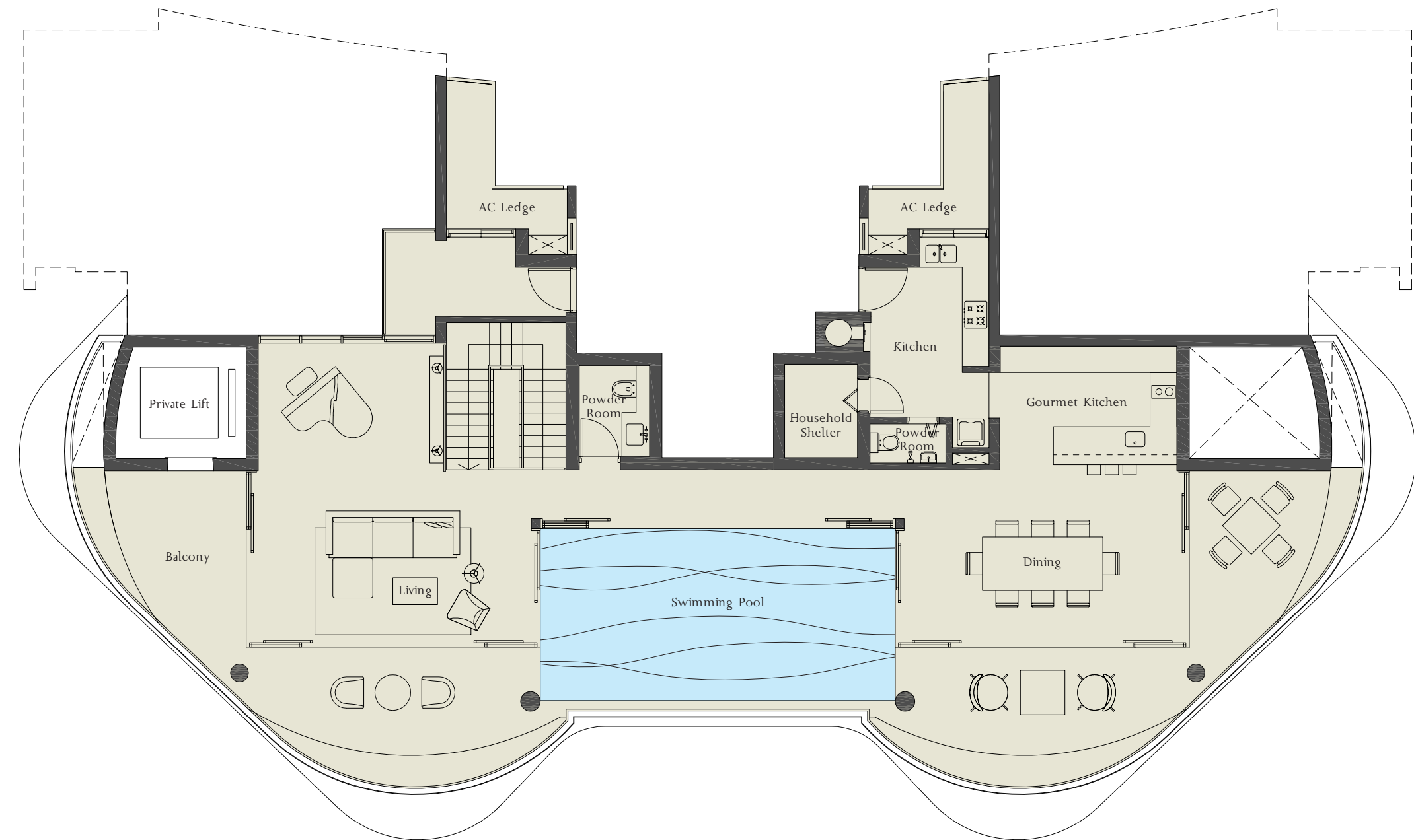
Type A | 6th to 21st storey | 171 sq m | 1841 sq ft



Penthouse 1 | 22nd Storey | 345 sq m | 3714 sq ft



Penthouse 2 Lower Level | 23rd Storey  
 Total 521 sq m | 5608 sq ft

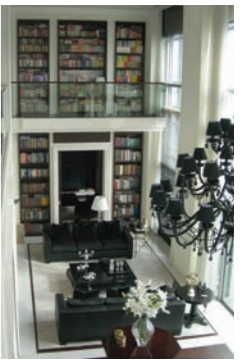
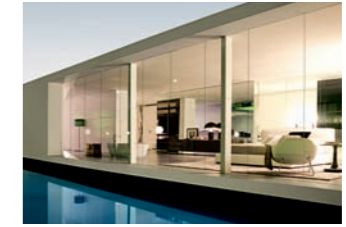


Penthouse 2 Upper Level | 24th Storey





## The Designers



### Architects 61

#### ARCHITECT

Founded in 1974, Architects 61 is one of the most established corporate architectural practices in Singapore with an impressive track record in premier retail, hotel and residential developments that have contributed significantly to the Singapore CBD skyline. Over the past five years, it has also increasingly extended its reach regionally and internationally.

Some of its major completed Singapore projects include The Fullerton Hotel, Raffles Hotel, The Four Seasons Condo and Scotts 28. Architects 61 also has a successful history of collaborative projects with international design consultants, working on notable projects in Singapore with industry leaders such as I.M Pei and Partners from USA, Kenzo Tange Associates from Japan, and Norman Foster and Partners from UK.

### Tierra Design

#### LANDSCAPE

Tierra Design is a multidisciplinary firm of landscape architects, architects, planners, horticulturalists and designers with a strong reputation for outstanding and innovative design. Its minimalist approach fuses inspiration from the arts, culture and nature, achieving a balance between aesthetics, functionality and sustainability in design solutions that are sensitive to the surroundings and the needs of the community.

Tierra's diverse portfolio includes landmark projects such as Singapore Changi Airport Terminal 3, Supreme Court of Singapore and the Singapore Embassy in Beijing as well as numerous high-profile condominiums, and residential, commercial, retail and hotel projects locally and regionally.

### Kemistry of Style

#### INTERIOR

Italian design firm Kemistry of Style is headed by Marco Corti, a highly regarded designer/architect with a background in interior design, industrial design as well as many years of experience in furniture design garnered with market leaders such as Tecno, Cappellini and B&B Italia.

Kemistry of Style has been responsible for a growing number of interior design and architectural projects worldwide, including private residences, hotels, retail and commercial projects in Europe, USA, Asia and the Middle East. The firm's signature approach is one of creating design solutions based on an intelligent analysis of space, materials, colour and proportion, resulting in a unified yet unique language of style.

## Creating Balance between Lifestyle Investment and Returns

Ferrell Residences is the debut residential development of Ferrell Asset Management, one of Singapore's leading Specialist Fund Managers.

Founded in 1999, Ferrell has carved its place at the forefront of the industry managing a diverse portfolio of traditional and alternative investment instruments, from hedge funds and direct investments to real estate, and has nurtured enduring relationships with its high net worth clients based on an unwavering sense of integrity.

The name Ferrell is derived from two Chinese characters 富怡 (fu yi), which represent Wealth and Harmony – a reflection of the company's philosophy of striking a balance between investment risk and potential returns. Ferrell's proven track record of sustained growth over the past decade stems from its strength in identifying excellent investment potential coupled with its commitment to optimising its clients' interests by minimising risks and optimising positive returns consistently.

Ferrell Residences represents a natural progression from the company's experience in investing in and managing properties and hospitality businesses, and combines creativity and innovation in a new expression of balance that promises to yield the rewards of an exceptional lifestyle.

